

Dedicated to Delighting Customers

WILSON•HURD®

July 8, 1998

P.O. Box 8028, 311 Winton Street
Wausau, WI 54402-8028
Fax 715 845-1681
Tel 715 845-9221

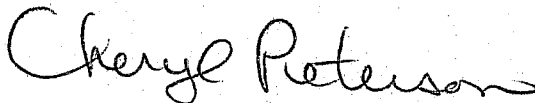
Mr. Bill McDonough
Interplex Electronics, Inc.
70 Fulton Terrace
New Haven, CT 06512

SUBJECT: SWEEP FUNCTION GENERATOR - OVERLAYS

Dear Bob,

Enclosed is the pinout drawing of the subject part. It was requested by Garry Higgins. Please call if you have any questions or need additional information.

Best regards,



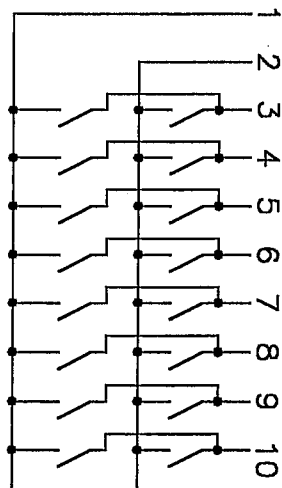
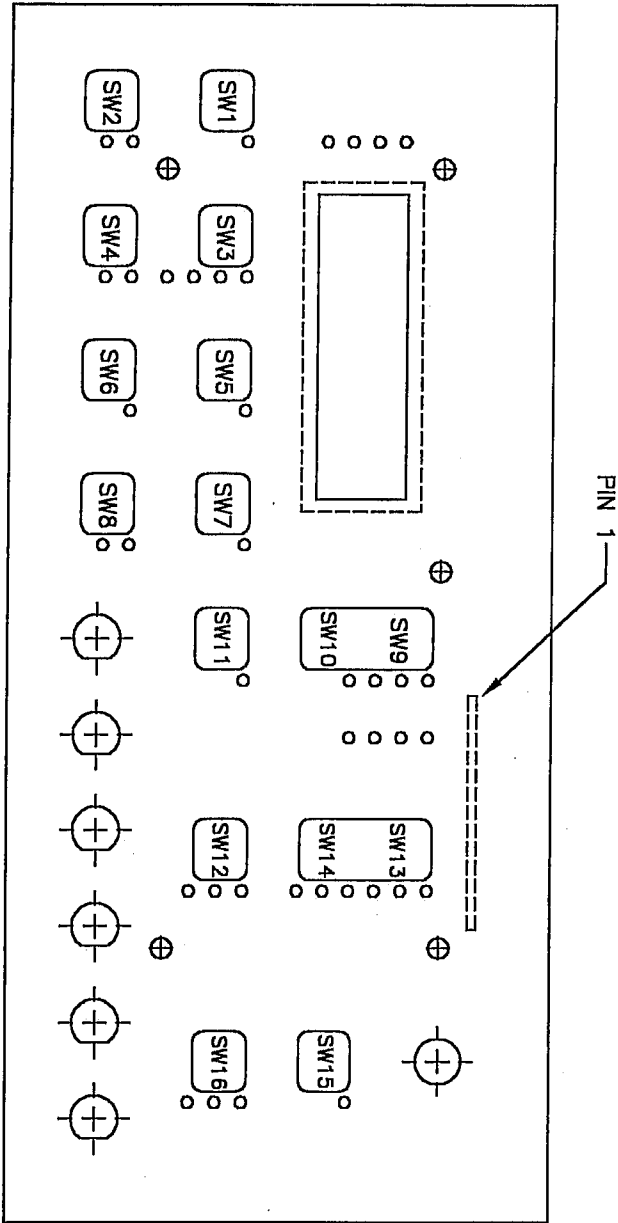
Cheryl L. Peterson
Account Representative

Enc.

cc: Garry Higgins

*Decorating & Fabrication
Custom Electronic Control Products*

PIN	3	4	5	6	7	8	9	10
1	SW9	SW1	SW3	SW5	SW7	SW11	SW13	SW15
2	SW10	SW2	SW4	SW6	SW8	SW12	SW14	SW16



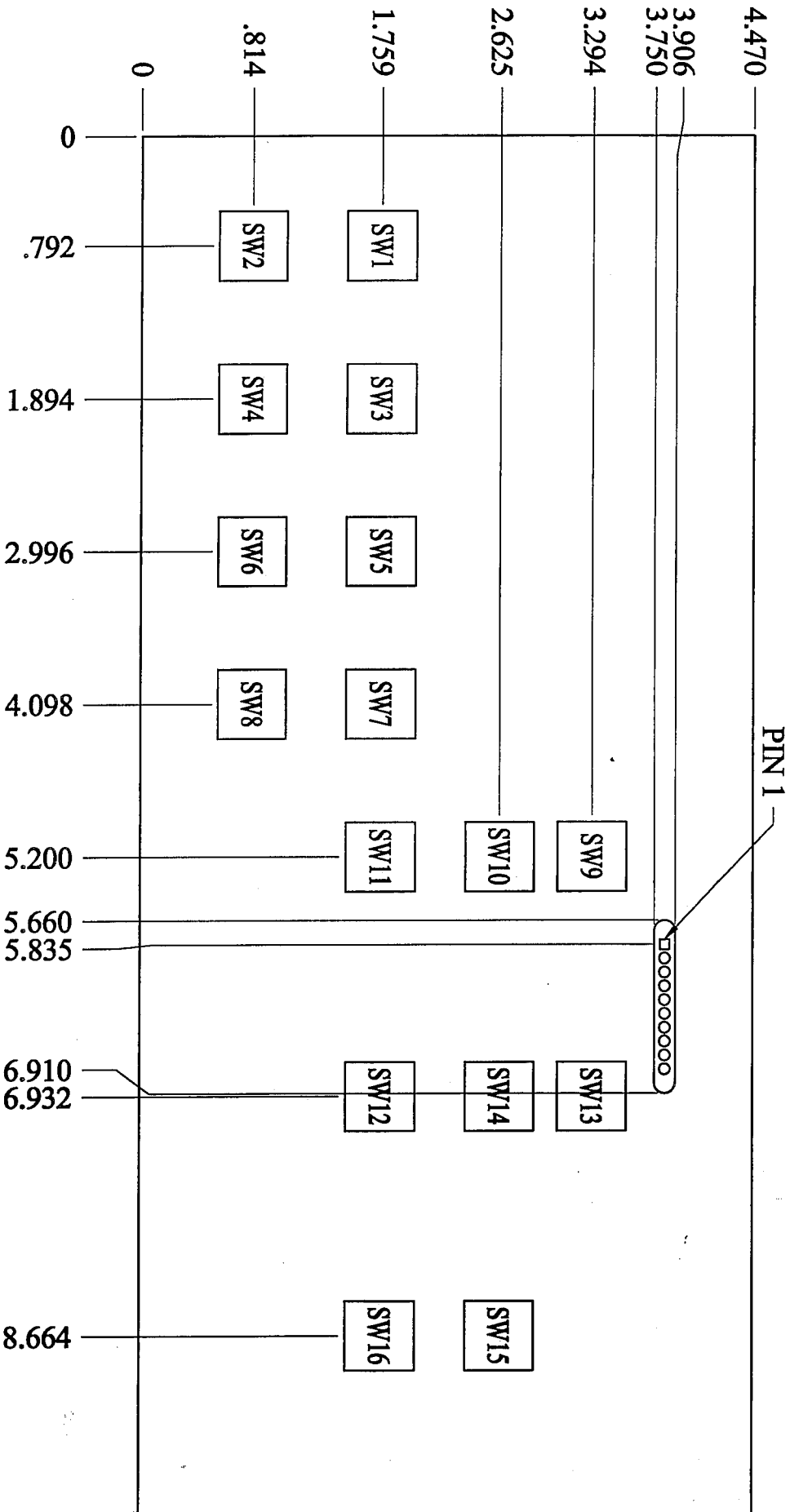
COMMON SWITCH PATTERN TO BE USED FOR PANELS 81-01-0401 THRU 81-01-0404

SWITCH SCHEMATIC

DATE	SYM	REVISION	AUTH	DR	CK

GLOBAL SPECIALTIES	
NEW HAVEN CT 06518	
TITLE	SCALE
FRONT PANEL SWITCH PINOUT DWG	DRAWN BY
DATE	DRAWING NUMBER
08/24/98	05-03-0567

PIN	3	4	5	6	7	8	9	10
1	SW9	SW1	SW3	SW5	SW7	SW11	SW13	SW15
2	SW10	SW2	SW4	SW6	SW8	SW12	SW14	SW16



WILSON-HURD®

THIS DOCUMENT CONTAINS PROPRIETARY AND CONFIDENTIAL INFORMATION AND IS EXCLUSIVE PROPERTY OF WILSON-HURD THEREFORE NEITHER THE DRAWING NOR ITS CONTENTS ARE TO BE USED, REPRODUCED OR DISCLOSED, IN WHOLE OR IN PART WITHOUT PRIOR CONSENT FROM WILSON-HURD, AND THIS DRAWING AND ALL COPIES OF IT SHALL BE RETURNED TO WILSON-HURD UPON DEMAND.

UNLESS OTHERWISE NOTED
ALL DIMENSIONS IN INCHES
TOLERANCES:
DECIMAL
XX \pm .01
XXX \pm .005
ANGLES (AS SPECIFIED)

SIZE
A

WILSON-HURD PART NO.
PINOUT
INTERPLEX

SCALE: NONE

SHEET REV: A

FILE NAME: CKT

SHEET